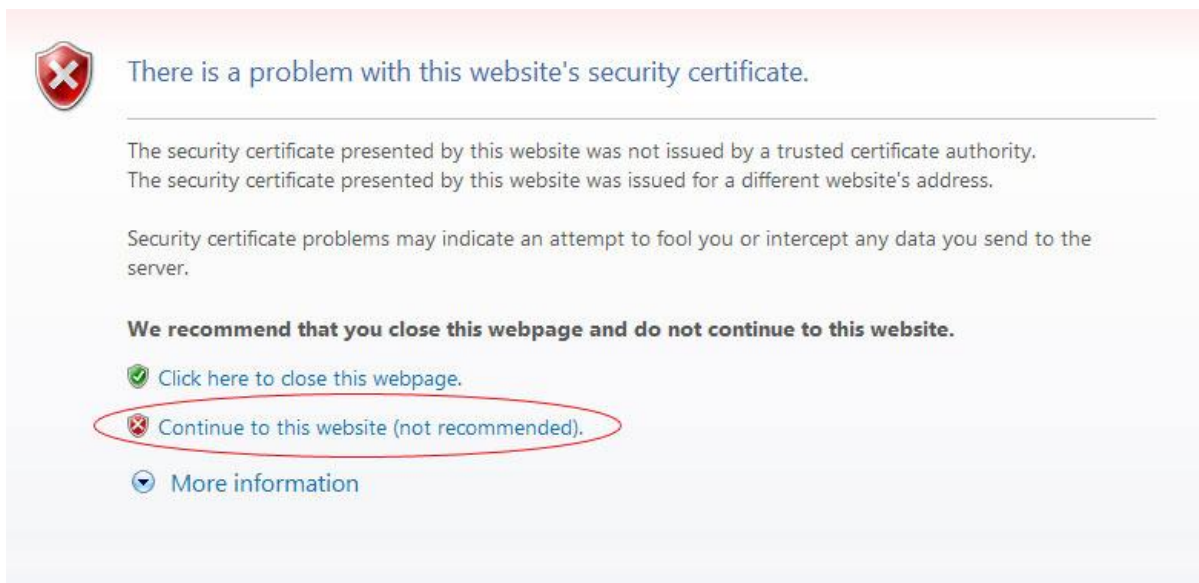


ورود به صفحه شخصی

به دلیل اعمال موارد امنیتی جدید، در صورت بروز مشکل برای ورود به صفحه شخصی با توجه به نوع مرورگر خود، به صورت زیر عمل نمایید:

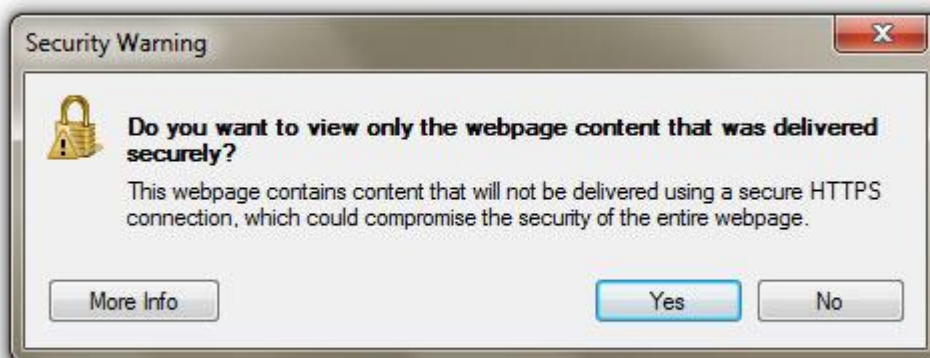
راهبهای استفاده از **IE** 

۱. در صورت نمایش صفحه زیر، گزینه **Continue to this website (not recommended)** را انتخاب نمایید.



The screenshot shows a security warning dialog box in Internet Explorer. At the top left is a red shield icon with a white 'X'. The main text reads: "There is a problem with this website's security certificate." Below this, it explains: "The security certificate presented by this website was not issued by a trusted certificate authority. The security certificate presented by this website was issued for a different website's address." It then states: "Security certificate problems may indicate an attempt to fool you or intercept any data you send to the server." A recommendation follows: "We recommend that you close this webpage and do not continue to this website." There are three options: "Click here to close this webpage." (with a green checkmark), "Continue to this website (not recommended)." (with a red 'X' and circled in red), and "More information" (with a blue downward arrow).

۲. پس از انتخاب گزینه فوق، پنجره ای به شکل ذیل ظاهر می شود؛ بر روی گزینه **NO** کلیک نمایید.



The screenshot shows a "Security Warning" dialog box. It features a yellow padlock icon with a red exclamation mark. The text asks: "Do you want to view only the webpage content that was delivered securely?" Below this, it explains: "This webpage contains content that will not be delivered using a secure HTTPS connection, which could compromise the security of the entire webpage." At the bottom, there are three buttons: "More Info", "Yes", and "No".



۱. در صورت نمایش صفحه زیر، گزینه **I Understand the Risks** را انتخاب نمایید.



This Connection is Untrusted

You have asked Firefox to connect securely to **wamp.tavanir.org.ir**, but we can't confirm that your connection is secure.

Normally, when you try to connect securely, sites will present trusted identification to prove that you are going to the right place. However, this site's identity can't be verified.

What Should I Do?

If you usually connect to this site without problems, this error could mean that someone is trying to impersonate the site, and you shouldn't continue.

Get me out of here!

▶ **Technical Details**

▶ **I Understand the Risks**

۲. با انتخاب گزینه فوق، کلیک **ADD EXCEPTION...** نمایان می‌شود آن را انتخاب نمایید.



This Connection is Untrusted

You have asked Firefox to connect securely to **wamp.tavanir.org.ir**, but we can't confirm that your connection is secure.

Normally, when you try to connect securely, sites will present trusted identification to prove that you are going to the right place. However, this site's identity can't be verified.

What Should I Do?

If you usually connect to this site without problems, this error could mean that someone is trying to impersonate the site, and you shouldn't continue.

Get me out of here!

▶ **Technical Details**

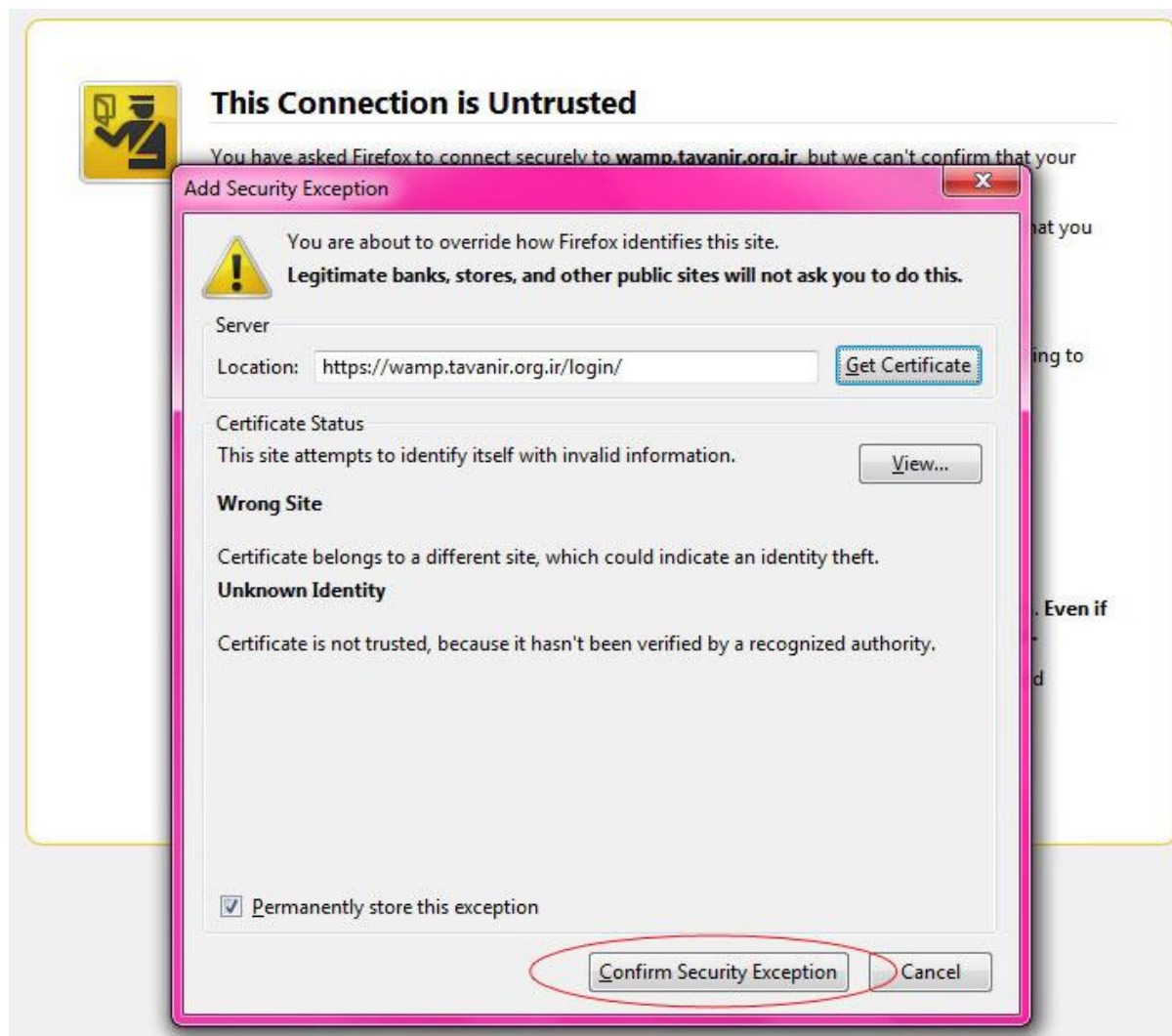
▶ **I Understand the Risks**

If you understand what's going on, you can tell Firefox to start trusting this site's identification. **Even if you trust the site, this error could mean that someone is tampering with your connection.**

Don't add an exception unless you know there's a good reason why this site doesn't use trusted identification.

Add Exception...

۳. با انتخاب کلید فوق، پنجره ای زیر نمایان می شود، کلید **Confirm Security Exception** را انتخاب نمایید.



قابل ذکر است که این تنظیمات فقط کافیست یکبار بروی مرورگر خود انجام دهید.